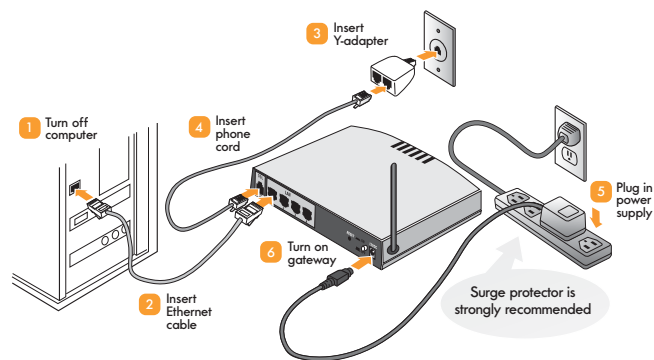


Step 1: Install DSL Gateway

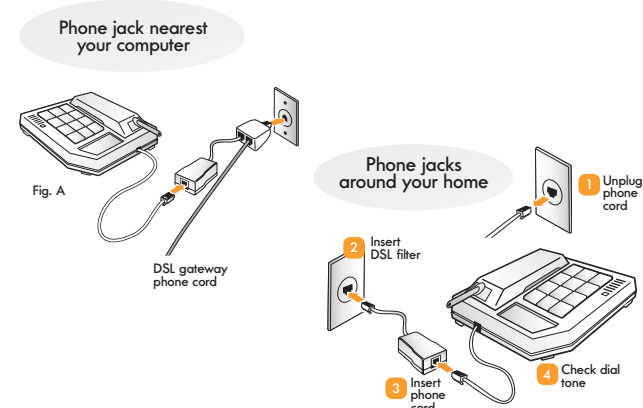
1. Shut down and turn off your computer.
2. **Ethernet Cable:** Insert one end of the Ethernet cable found in your Small Office DSL kit into your computer's Ethernet port (or if you have a network, to your network hub), and the other end into one of your gateway's LAN ports (numbered 1-4).
3. **Y-Adapter:** Insert the Y-adapter into the phone jack nearest your computer.
4. **Phone Cord:** Insert one end of the phone cord found in your Small Office DSL kit into one side of the Y-adapter, and the other end into the gateway's DSL port.
5. **Power Supply:** Plug a surge protector into the nearest electrical outlet. Plug the power supply into the surge protector and insert the other end into the gateway's Power port.
6. Turn on the gateway.
7. Wait a minute or so, and then turn on your computer.

Use this illustration to check your setup:



1

Step 2: Install DSL Filters



Because your DSL signal is active on every phone jack provisioned for DSL, you will need to install a DSL filter wherever you have something plugged into a jack. This includes any phone, answering machine, or fax machine. DSL filters will reduce the interference between these devices and your DSL signal.

In Step 1, you installed a Y-adapter. If you want to use a phone in this location, insert a DSL filter into the open side of the Y-adapter, and then insert the phone cord into the DSL filter (see Fig. A).

For all other phone jacks:

1. Unplug the phone cord from the phone jack.
2. Insert a DSL filter* into the phone jack.
3. Insert the phone cord into the DSL filter.
4. Check for a dial tone.
5. Repeat steps for each phone (or other device) in your office.

*If you require more than the DSL filters included with this kit, please refer to the EarthLink Support section of this guide for further instructions.

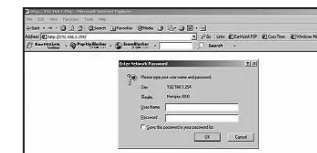
2

Step 3: Check for a DSL Signal

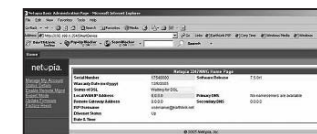
- The **POWER** and **LAN** lights on your gateway should be lit.
- Within about five minutes, the DSL light should be steady green. If it's not, please see *Basic Troubleshooting* (chapter 3, page 73) of the Netopia 3300 Series CD.

Step 4: Configure DSL Gateway

1. Open your Web browser (like Internet Explorer), to the following address: <http://192.168.1.254>. The **Enter Network Password** screen will appear.



2. In the **User Name** field, type admin.
3. In the **Password** field, type password and click **OK**. The gateway **Home** page will appear.
4. Click the **Expert Mode** link on the left-side of the page. The **Expert Mode Confirmation** screen will appear.



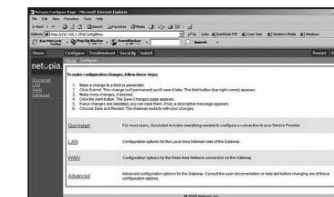
5. Click **OK**.



3

Step 4, continued

6. Click the **Configure** tab.
7. Click the **Quickstart** link.



8. Type your EarthLink email address (like alexsmith99@earthlink.net) in the **ISP Username** field and your EarthLink password in the **ISP Password** field. Both can be found on your EarthLink welcome letter. Your password is case-sensitive, so make sure the **CAPS LOCK** key on your keyboard is off. Click **Connect to the Internet**.



9. The gateway **Home** page will appear again. Next to "Status of DSL" it will now say "Connected."
10. Leave your Web browser open to the gateway **Home** page, so you can configure the gateway for wireless in Step 6.

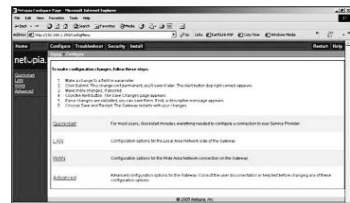
Step 5: Connect Your Other Computers

1. Insert one end of an Ethernet cable into your computer's Ethernet port, and the other end into one of your gateway's remaining LAN ports (numbered 1-4).
2. Repeat for each computer.

4

Step 6: Configure the Gateway for Wireless

1. Open your Web browser to the gateway Home page.
2. Click the **Configure** tab.
3. Click the **LAN** link.



4. In the **Other LAN Options** box, click the **Wireless** link.

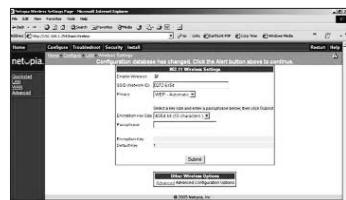



5. The **Wireless Settings** screen will appear. Check the **Enable Wireless** box.
6. In the **SSID (Network ID)** field, type whatever name you would like to use for your wireless network, for example "My office network." Write the name down, you will need it later to add other computers to your wireless network.
7. From the **Privacy** menu, choose **WEP - Automatic**.



Step 6, continued

8. The **Wireless Settings** screen will expand to show you more options. From the **Encryption Key Size** menu, choose **64Bit**, **128Bit**, or **256Bit** encryption.
9. Make up (and write down) a password or phrase, to be used when adding other computers to your wireless network. (Other devices may refer to this as the "Network Key" or "Network Password.") Type your password into the **Passphrase** field. Click **Submit**.



10. You'll need to confirm your wireless settings by clicking on the alert icon  in the upper-right corner of the page.

11. The **Save Changes** screen will appear. Click the **Save** link. Your gateway is now configured for wireless.



Note: To configure advanced wireless settings (like enabling multiple wireless IDs, adding other users to your wireless network, and setting another's passphrase and encryption): Click the **Configure** tab > the **LAN** link > and the **Wireless** link. The **Wireless Settings** screen will appear. In the **Other Wireless Options** box, click the **Advanced** link.

OUTER BACK PAGE WHEN FOLDED

EarthLink Support

If you do not have an Ethernet port on your computer (Step 1):

- You will need to purchase and install an Ethernet adapter (Also called a network interface card or NIC).
- Ethernet adapters can be purchased from a computer or electronics store.

If you do not have a surge protector (Step 1):

- Surge protectors protect your modem and other computer equipment, and can be purchased from a computer or electronics store.
- While EarthLink strongly recommends using a surge protector, it is not required to complete setup.

If you need more DSL filters for your telephones and other devices (Step 2):

- Unplug any remaining phones that do not have a DSL filter installed, as they may interfere with your DSL signal.
- If you wish to use a two-line phone, you must use a two-line DSL filter.
- Additional DSL filters for wall-mounted phones, two-line phones, and other devices can be purchased from a computer or electronics store.

Troubleshooting Your DSL Gateway Connection

If the **POWER** light on your gateway does not turn steady green after turning the gateway on:

- Check the power supply. Is the gateway connected to a live electrical outlet? Are the connections secure? Is your gateway turned on?

If the **DSL** light is not steady green:

- Make sure the DSL phone cord you are using is the one provided with your gateway and that it is directly connected to the Y-adapter.
- Make sure your gateway is connected to a telephone jack provisioned for DSL. If your phone company installed a phone jack specifically for DSL, make sure your gateway is plugged into that jack.

Plug your gateway into another phone jack in your office and check for a steady green light.

- Power-cycle: Turn off and unplug your gateway then shut down and turn off your computer for 30 seconds. Plug the gateway back in and turn your gateway on, wait 30 seconds, and then turn on your computer.
- Make sure your gateway is not on or near other electronic devices such as your computer monitor, speakers, a cordless phone (handset or base), or a halogen light.
- Some phones may cause interference even after installing DSL filters. Try unplugging all the phones in your office and power-cycling your gateway and computer.
- If your lights are still not lit or are flashing, see the Basic Troubleshooting section of the Netopia 3300 Series CD included with your DSL hardware to determine the source of the problem.

If you are still having problems with your DSL gateway connection, contact EarthLink Business Access Technical Support at 1.888.698.4357.

© 2006 EarthLink, Inc. EarthLink and the EarthLink logo are registered trademarks of EarthLink, Inc. Trademarks are property of their respective owners. All rights reserved. G121-5083

SEE THIS PAGE FIRST WHEN FOLDED

EarthLink® Small Office DSL Quickstart Guide

Welcome to EarthLink Small Office DSL

Keep This Quickstart Guide Until You Receive Your Small Office DSL Hardware.

Your EarthLink Small Office DSL hardware kit will arrive separately. When it arrives, use this guide to quickly and easily install your gateway.

Your Small Office DSL kit will include the following DSL components. If you're missing any components, contact EarthLink Business Access Customer Service at 1.888.698.4357 Monday through Friday, 8 a.m. to 8 p.m. ET.

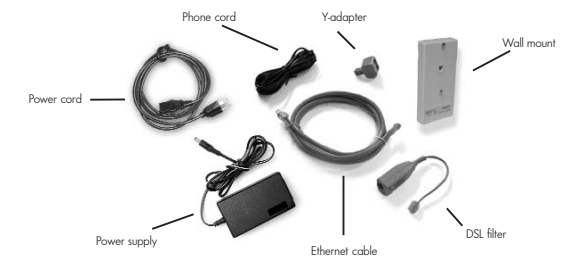


Figure 1: DSL Kit Components

This guide will walk you through the process of setting up your new High Speed DSL Internet service. You'll find easy instructions in the pages that follow:

• Step 1: Install the DSL gateway	p. 1
• Step 2: Install the DSL filters	p. 2
• Step 3: Check for a DSL signal	p. 3
• Step 4: Configure your DSL gateway	p. 3
• Step 5: Connect other computers	p. 4
• Step 6: Configure the gateway for wireless	p. 5

BEFORE YOU START: Make sure you are installing your DSL equipment after 5 p.m. on your Service Activation Date (the date you were given when you signed up for EarthLink Small Office DSL).

